

## Custom C510 Heavy Duty Conveyor with Lift

Designed for efficient load transfers of heavy loads. The Custom C510 is equipped with a powered chain conveyor capable of handling loads up to 20,000 lbs. The chain conveyor also has a vertical lift stroke of 7/8" for accurate pickup and delivery operations.

Two bidirectional steered drive wheels allow quad travel (forward, reverse, and sideways) for greater flexibility in movement and speed. The open section frame suspension keeps the drive wheels in contact with the floor at all times. All wheels feature extra thick polyurethane tread for long life and quiet operation. Electromechanical brakes are included as an integral part of the permanent magnet motor and sealed gearbox assembly. Each Custom C510 is equipped with a 48-volt battery power source, which is sized for more than a full shift of operation.



### Features

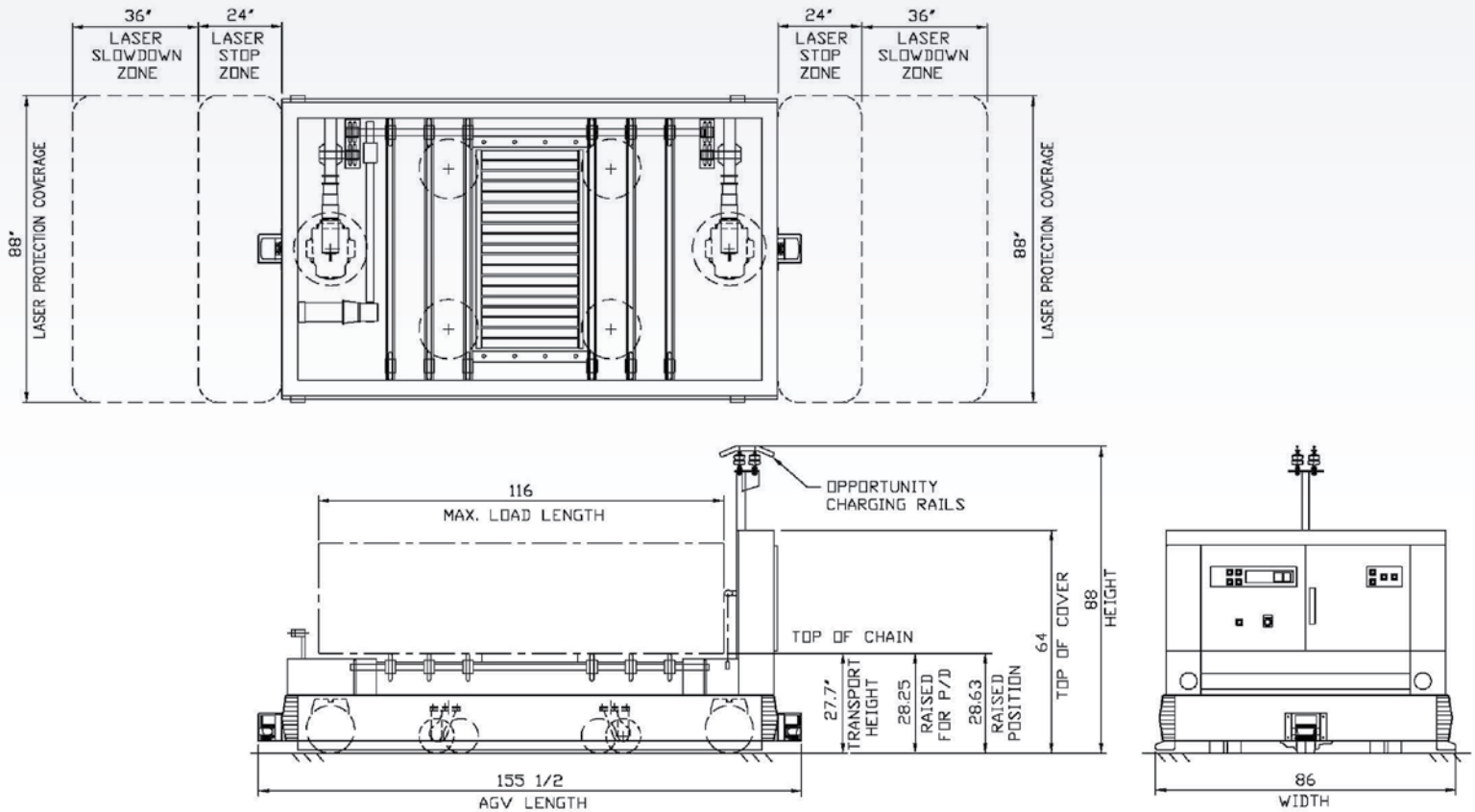
- ▶ Electrical Cabinet Design Provides Easy Access to All the Electrical Components.
- ▶ Travel Drive Gearbox Gears are Hardened for Long Life.
- ▶ AGV Frame is of Welded Plate Construction.
- ▶ Corecon's Modular Control System separates AGV Functions, making Problem Diagnosis Quicker, Reducing AGV Downtime.
- ▶ AGV Safety Devices Meet and Exceed ANSI and OSHA Standards for AGVs.

### Benefits

- ▶ Long Life Design (15+ Years of Life)
- ▶ Low Cost of Ownership
- ▶ Low Maintenance
- ▶ Access to All Major AGV Components
- ▶ Modular Design for Faster Diagnosis & Quick Repair
- ▶ Reduced Risk of Environmental Contamination since Hydraulic Systems are Eliminated
- ▶ Opportunity Charging System Eliminates Battery Handling
- ▶ Simple AGV Deployment
- ▶ Variety of Tooling Available for Many Patriot AGV Applications

### AGV Options

- ▶ Opportunity Charging
- ▶ Optical Communication
- ▶ Radio Communication
- ▶ Sealed Batteries
- ▶ Laser Safety Sensor
- ▶ Quick Charge Batteries



## Performance

|  |                            |
|--|----------------------------|
| Speed Forward:                             | 125 ft./Min.Max            |
| Speed Reverse:                             | 125 ft/Min                 |
| Speed Around corners:                      | 50ft/Min.                  |
| Creep Speed:                               | 12ft/Min.                  |
| Accerleration & Deceleration:              | 0-125ft/Min = 6Sec. in 5ft |
| Stopping and Repetitive Stopping Accuracy: | +/- 3/8                    |
| Minimum cornering Radius:                  | 36"                        |
| Load Capacity (standard):                  | 20,000 Lbs. Max            |

## Size / Weight

|                                |             |
|--------------------------------|-------------|
| Overall Length:                | 155.5"      |
| Overall Width:                 | 86"         |
| Overall Height:                | 86"         |
| Service Weight With Batteries: | 12,500 Lbs. |

## Conveyor

|   |            |
|---|------------|
| Chain Conveyor Vertical Lift Stroke:                                  | 7/8"       |
| Top of Conveyor Chain from floor (Transport Height):                  | 27.7"      |
| Top of Conveyor Chain from floor (Maximum Height in Raised Position): | 28.63"     |
| Maximum Load Size (Others Available):                                 | 84"x116"   |
| Conveyor Speed (Others Available):                                    | 30 ft/min. |

