

## Patriot P305 Small Assembly with Lift



Designed for applications requiring a lifting platform ideal for product assembly operations. The Patriot P305 Automated Guided Vehicle is capable of lifting loads up to 1000 lbs with selectable lifting positions suitable for plant assembly personnel. The Patriot P305 AGV can accommodate special tooling required for a customer's specific application.

A bidirectional single drive unit allows for a great deal of flexibility in movement and speed. The single wheel suspension keeps the drive wheel in contact with the floor at all times. All wheels feature extra thick polyurethane tread for long life and quiet operation. Electromechanical brakes are included as an integral part of the permanent magnet motor and sealed gearbox assembly. Each Patriot P305 is equipped with a 24-volt battery power source. Vehicle object detection sensors reduce vehicle speed and stop vehicle travel when an obstruction is in the travel path of the vehicle.

### Features

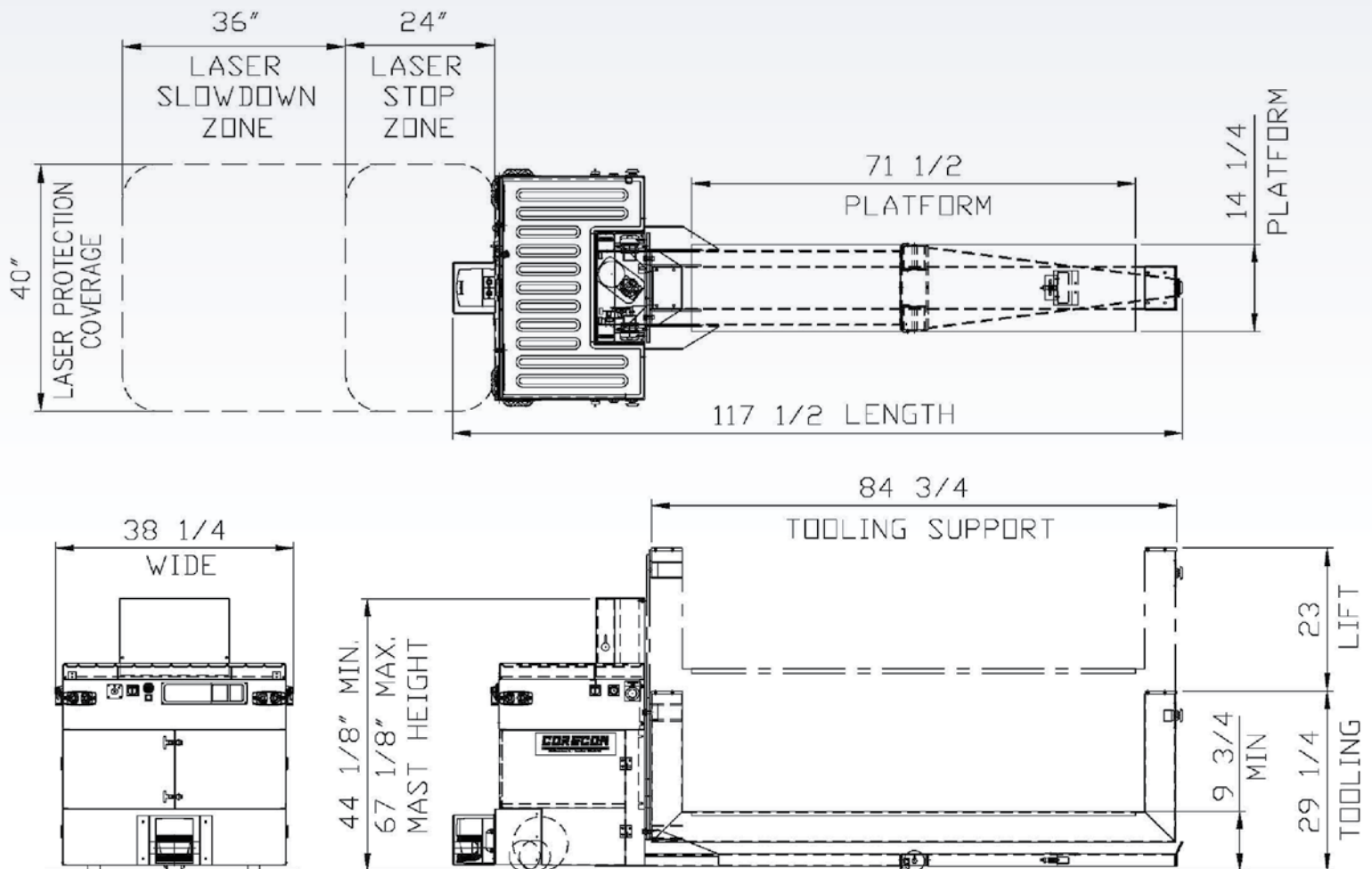
- ▶ Electrical Cabinet Design Provides Access to All the Electrical Components.
- ▶ Travel Drive Gearbox Gears are Hardened for Long Life.
- ▶ AGV Frame is of Welded Plate Construction.
- ▶ Corecon's Modular Control System separates AGV Functions making Problem Diagnosis Quicker, Reducing AGV Downtime.
- ▶ AGV Safety Devices Meet and Exceed ANSI and OSHA Standards for AGVs.

### Benefits

- ▶ Low Cost of Ownership
- ▶ Low Maintenance
- ▶ Access to All Major AGV Components
- ▶ Modular Design for Faster Diagnosis & Quick Repair
- ▶ Reduced Risk of Environmental Contamination since Hydraulic Systems are Eliminated
- ▶ Opportunity Charging System Eliminates Battery Handling
- ▶ Simple AGV Deployment
- ▶ Variety of Tooling Available for Many Patriot AGV Applications

### AGV Options

- ▶ Opportunity Charging
- ▶ Optical Communication
- ▶ Radio Communication
- ▶ Sealed Batteries
- ▶ Laser Safety Sensor
- ▶ Quick Charge Batteries



## Performance

Speed Forward:	135 ft./Min.Max
Speed Reverse:	135 ft/Min
Acceleration & Deceleration:	0-135 ft Min = 3 Sec. in 5 ft.
Stopping and Repetitive Stopping Accuracy:	+/- 3/8 "
Minimum Cornering Radius:	36"
Fork Lifting Speed:	30 ft/min.
Lift Capacity at 24" Center:	1000 Lbs.
Battery Capacity (Standard):	105 Amp/Hr.

## Size / Weight

Overall Length:	117.5"
Overall Width:	38.2"
Overall Height Lift Down:	44.1"
Overall Height Lift Up:	67.1"
Service Weight With Batteries:	1,600 Lbs.

## Forks

Lift Travel:	23"
Lifting Speed:	2 in/sec
Lowered Platform Height:	9 3/4"
Lowered Tooling Height:	29 1/3"
Raised Tooling Height:	52 1/4"
Lift Accuracy:	+/- 1/8"

