

Patriot P325 Horizontal Roll Handling



Corecon's Patriot Series P325 Forklift AGVs can be fitted with either standard pallet handling forks or roll handling forks capable of handling loads up to 4,000 Lbs.

A bidirectional vehicle with a single drive unit allows for a great deal of flexibility in movement and speed. The single wheel suspension keeps the drive wheel in contact with the floor at all times. All wheels feature extra thick polyurethane tread for long life and quiet operation. Electromechanical brakes are included as an integral part of the permanent magnet motor and sealed gearbox assembly. Each Patriot P325 is equipped with a 48-volt battery power source, which is sized for more than a full shift of operation. Vehicle object detection sensors reduce vehicle speed and stop vehicle travel when an obstruction is in the travel path of the vehicle.

Features

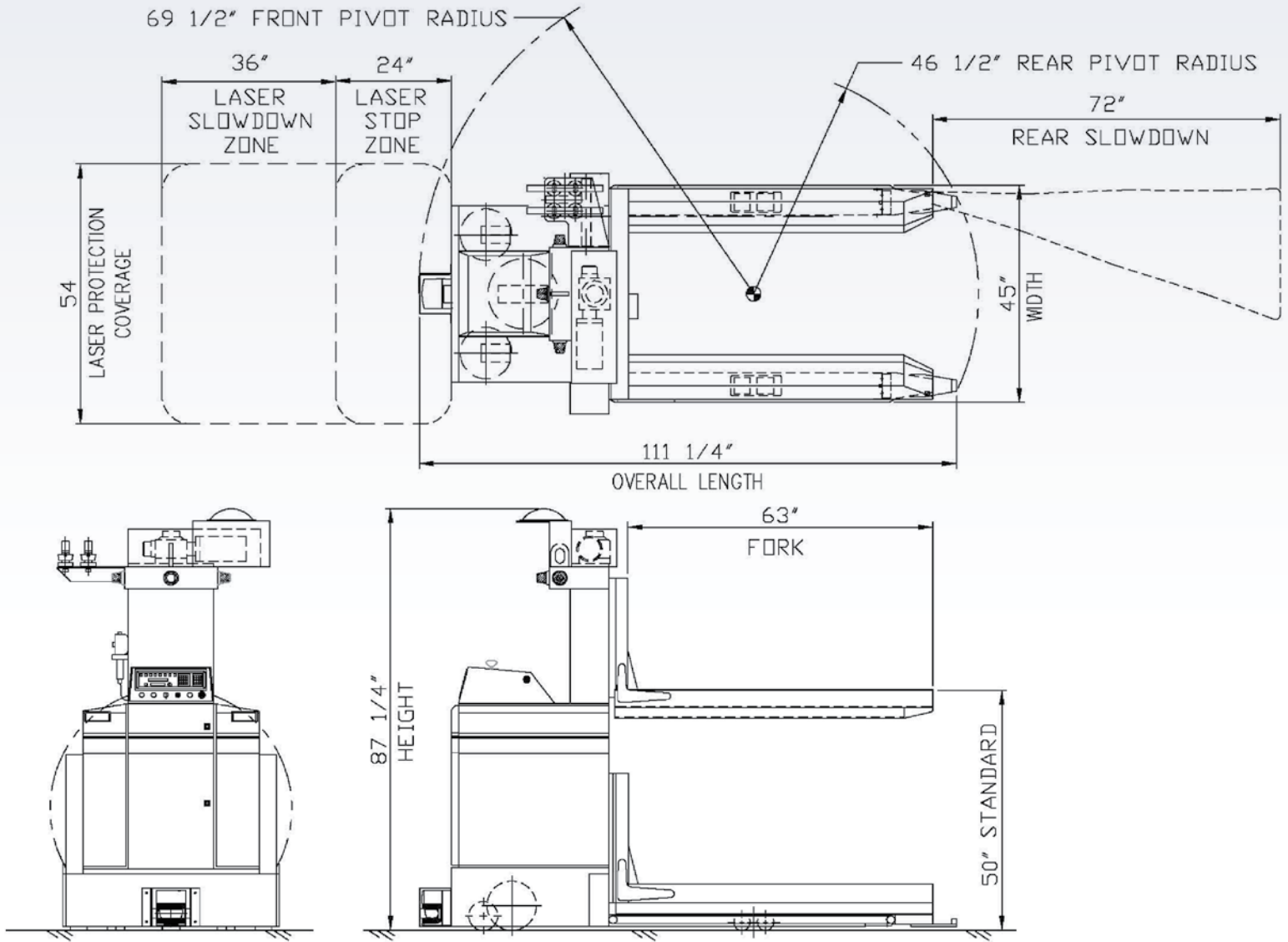
- ▶ Each Roll Handling Fork is Custom Engineered to Provide the Best Possible Solution for all your Roll Handling Requirements
- ▶ Cabinet Design Provides Easy Access to the Electrical Components.
- ▶ Travel Drive Gearbox Gears are Hardened, Precision Ground, with Lubrication for Long Life and Quiet Operation.
- ▶ Idle Wheels have "Sealed for Life" Bearings and Hardened Axle Shafts.
- ▶ AGV Frame is of Welded Construction Using Heavy Wall Structural Tubing which Provides High Bending and Torsion Strength and Stiffness.
- ▶ Corecon's Modular Control System separates AGV Functions, making Problem Diagnosis Quicker, Reducing AGV Downtime.
- ▶ AGV Safety Devices Meet and Exceed ANSI and OSHA Standards for AGVs.

Benefits

- ▶ Low Cost of Ownership
- ▶ Low Maintenance
- ▶ Access to All Major AGV Components
- ▶ Modular Design for Faster Diagnosis & Quick Repair
- ▶ Reduced Risk of Environmental Contamination since Hydraulic Systems are Eliminated
- ▶ Opportunity Charging System Eliminates Battery Handling
- ▶ Simple AGV Deployment

AGV Options

- ▶ Opportunity Charging
- ▶ Optical Communication
- ▶ Radio Communication
- ▶ Sealed Batteries
- ▶ Laser Safety Sensor
- ▶ Quick Charge Batteries



Performance

Speed Forward:	200 ft./Min.Max
Speed Reverse:	100 ft/Min
Acceleration & Deceleration:	0-200 ft Min = 3 Sec. in 5 ft.
Rotate Vehicle 90 Degrees:	12 sec
Stopping and Repetitive Stopping Accuracy:	+/- 3/8 "
Minimum Cornering Radius:	36"
Fork Lifting Speed:	2.2 in/sec
Lift Capacity:	2,000 Lbs.
Battery Capacity Standard:	240 Amp/Hr

Size / Weight

Overall Length:	111.3"
Overall Width:	45"
Overall Height:	87.3"
Service Weight With Batteries:	3200 Lbs.

Forks - Roll Size

Fork Length:	63"
Max Roll Die:	50"
Min Roll Die:	45"
Max Roll Length:	59"
Lift Accuracy:	+/- 1/8"

